

# SBP-160TM

Tilt mount

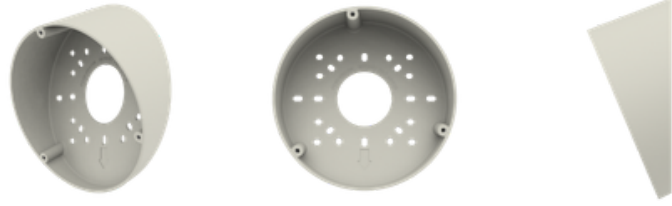


## Key Features

- Aluminum
- Can be used with PNV-9080R  
XNV-6080/6080R/8080R  
SNV-5084/5084R/6084/6084R/6085R  
SNV-7084/7084R/8080/8081R  
SCV-6081R

# SBP-160TM

Tilt mount

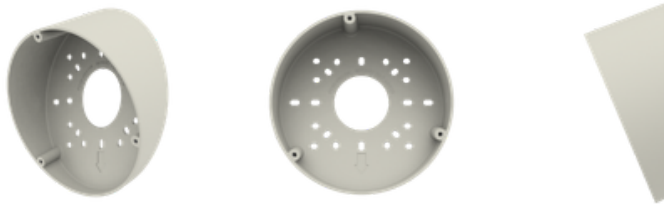


## Specifications

Mechanical	
Color	Ivory
Material	Aluminum
Product dimensions / weight	ø160x57.6mm / 325g
Supported products	XNV-6080R, XNV-8080R ※ For further compatible models, please visit our website or use Toolbox

# SBP-160TM

Tilt mount



CAD

Unit: mm [inch]

