



Network

PTZ

# XNP-9300RW

4K 30x IR PTZ with built-in wiper



## Key Features

- Max. 4K resolution
- 5~150mm(30x) optical zoom (digital 32x, total 960x zoom)
- Max. IR viewable length 200m
- Day & Night(ICR), extreme WDR, DIS(Built-in gyro sensor)
- Intelligent Analytics, Object auto tracking(Person/Vehicle), Target lock tracking
- H.264, H.265, MJPEG codec, WiseStreamII
- IP66, IK10, NEMA4X, NEMA-TS 2(2.2.8, 2.2.9)
- PTZ PLUS Design applied(Compact, Lighter, Simple cabling)
- SFP-supported by injector

## Compatible Devices



SBP-300LMW



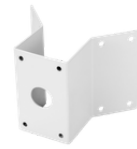
SBP-156HMW



SBP-300WMW1



SBP-156LMW



SBP-300KMW



SBP-300BW



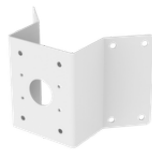
SBP-300PMW



SBP-156WMW



SBP-300WMW



SBP-156KMW



SBP-156CMW



SBP-300CMW

## XNP-9300RW

4K 30x IR PTZ with built-in wiper



### Specifications

Video		
Imaging Device	Size	1/2.8"
	Type	CMOS
Resolution	3840x2160, 2592x1944, 2592x1464, 1920x1080, 1600x1200, 1280x1024, 1280x960, 1280x720, 1024x768, 800x600, 800x448, 720x576, 720x480, 640x480, 640x360, 320x240	
Max. Framerate	H.265/H.264	30fps/25fps(60Hz/50Hz)
	MJPEG	30fps(@8MP Max. 5fps)
Min. Illumination (Lux)	Color(1/30sec, 30IRE)	0.1
	BW(1/30sec, 30IRE)	0.01
Lens		
Focal Length (mm)	5~150	
Zoom Ratio	Optical	30x
	Digital	32x
Max Aperture Ratio (F number)	Wide	1.6
	Tele	4.56
Angular Field of View	Horizontal	57.42°~2.19°
	Vertical	33.54°~1.25°
Min. Object Distance	3m(9.84ft)	
Focus Control	Oneshot AF, Focus save	
Lens Type	DC auto iris	
Pan / Tilt / Rotate		
Pan / Tilt / Rotate Range	Pan	360° Endless
	Tilt	90°~-20°
Pan Speed	Preset	Max. 500°/sec
	Manual	0.024°/sec~250°/sec
Tilt Speed	Preset	Max. 350°/sec
	Manual	0.024°/sec~250°/sec
Sequence	Preset(300ea), Swing, Group(6ea), Trace, Tour, Auto Run, Schedule	

## Pan / Tilt / Rotate

Preset Accuracy	Up to $\pm 0.1^\circ$ , Pan/Tilt correction
-----------------	---

## Operational

Direction Indicator	Support	
Day & Night	Auto(ICR)	
Backlight Compensation	BLC, HLC, WDR, SSSDR	
Wide Dynamic Range (dB)	120	
Digital Noise Reduction	SSNR V	
Digital Image Stabilization	Support(built-in gyro sensor)	
Defog	Support	
Motion Detection	Quantity	8ea
	Shape	8point Polygonal zones
Privacy Masking	Quantity	32ea
	Shape	4point Quadrangle zones
	Color / Option	Gray, Green, Red, Blue, Black, White, Mosaic
Gain Control	Max gain, Manual	
White Balance	ATW, NarrowATW, AWC, Manual, Indoor, Outdoor, Mercury, Sodium	
Electronic Shutter	Mode	Minimum, Maximum, Anti flicker
	Speed Range	2~1/12,000sec
Video Rotation	Flip&Mirror	
Alarm Interface	Others	Support alarm I/O via optional I/O box
Alarm Triggers	Analytics, Network disconnect, Alarm input	
Alarm Events When Alarm Trigger Occurred	File upload(image): e-mail/FTP/SFTP, File upload(video clip): FTP/SFTP, Notification: e-mail, Recording: SD/SDHC/SDXC or NAS recording at event triggers,Alarm output, Handover: PTZ preset,send message by HTTP/HTTPS/TCP,Audio clip playback, MQTT: publication	
Audio In	Support via optional I/O box	
Audio Out	Support via optional I/O box	
Light Type	IR LED	
Light Viewable Length	IR	Wise IR 200m(656.17ft)
IR Wavelength	850nm	
Water Removal	Support(with Wiper, Lens heater)	
Auto Tracking	Support, Object auto tracking(Person/Vehicle), Target lock tracking	

## Analytics

Analytics Events	Normal	Motion detection, Tampering, Fog detection, Face detection, Audio detection, Sound classification, Shock detection, Virtual area(Lotering, Intrusion, Enter/Exit, Appear/Disappear), Virtual line(Crossing, Direction)
------------------	--------	--

## Network

Ethernet		Metal shielded RJ-45(10/100BASE-T)
Video Compression		H.265/H.264: Main/Baseline/High, MJPEG
Smart Codec		Manual, WiseStream II
Bitrate Control		H.265/H.264: CBR or VBR, MJPEG: VBR
Streaming	Unicast	Up to 20 users
	Multicast	Support
	Multiple Streaming	Up to 10 profiles
Protocol		IPv4, IPv6, TCP/IP, UDP/IP, RTP(UDP), RTP(TCP), RTCP, RTSP, NTP, HTTP, HTTPS, SSL/TLS, DHCP, FTP, SFTP, SMTP, ICMP, IGMP, SNMPv1/v2c/v3(MIB-2), ARP, DNS, DDNS, QoS, UPnP, Bonjour, LLDP, CDP, SRTP(TCP, UDP Unicast), MQTT, NTCIP 1205
Application Programming Interface	ONVIF	S, G, T
	Others	SUNAPI(HTTP API), Hanwha Vision Open Platform
Direct Cloud Connection		Support

## Security

OS / Firmware Protect		Encrypted firmware, Secure boot, Signed firmware
User authentication		Digest authentication, Prevent brute-force attack
Network authentication		IEEE 802.1X(EAP-TLS, EAP-LEAP, EAP-PEAP, MSCHAPv2)
Secure Communication		HTTPS, WSS(WebSocket Secure), SRTP
Access Control		IP-based access control
Data Protect		Encryption credentials, Encrypt compress for live recording file export
Audit		Access / System / Event Log management
Device ID		Device certificate(Hanwha Vision Root CA)
Secure Storage		TPM(Trusted platform module), HTPM(Hanwha Trusted Platform Module), SDcard partition encrypt(AES-256)
Security Certificate		CyberSecurity assurance program UL CAP(UL 2900-2-3 L2)

## General

Memory	RAM	4GB
	Flash	512MB
Edge Storage	Micro SD/SDHC/SDXC	Max. 512GB x 2slot(Total 1TB)

## Environmental & Electrical

Operating Condition	Temperature	-40°C~+55°C(-40°F~+131°F)
	Humidity	0~100% RH(condensing)
	Others	+74°C(+165°F)(Max) based on NEMA-TS 2(2.2.7), Start up should be done at above -30°C, Humidity control with AIR vent
Storage Condition	Temperature	-50°C~+60°C(-58°F~+140°F)
	Humidity	0~90% RH(non-condensing)

### Environmental & Electrical

EPA(Effective Projected Area)		0.048m <sup>2</sup>
Input Voltage		PoE++(IEEE802.3bt type3, Class6)
Power Consumption	PoE	Max. 42W, Typical 20W

### Mechanical

Color	White, Black	
Material	Aluminum, PC(Polycarbonate)	
RAL Code	RAL9003, RAL9005	
Product Dimensions	ø184.9x318.8mm(7.28x12.55")	
Product Weight	5,400g(11.90lb)	

### DORI (EN62676-4 standard)

Detect (25PPM/ 8PPF)	Wide	140.2m(460ft)
	Tele	4018.1m(13182.6ft)
Observe (63PPM/ 19PPF)	Wide	56.1m(184ft)
	Tele	1607.2m(5273.1ft)
Recognize (125PPM/ 38PPF)	Wide	28.0m(92ft)
	Tele	803.6m(2636.5ft)
Identify (250PPM/ 76PPF)	Wide	14.0m(46ft)
	Tele	401.8m(1318.3ft)

# XNP-9300RW

4K 30x IR PTZ with built-in wiper



**CAD**

Unit: mm [inch]

